

CHARLOTTE MECKLENBURG

LiBRARY

# Sarah Stevenson Tuesday Forum

April 8, 2025

Marcellus Turner (MT)  
CEO & Chief Librarian

# Our Mission

## Improve lives and build a stronger community

### Core Values

Learning – We connect children, teens and adults with reading and information to expand curiosity, explore interests, and discover passions.

Openness – We provide a friendly, helpful learning environment that supports free access to library resources and the exchange of information.

Respect – We act with integrity, deliver exceptional service, and earn the public's trust as responsible stewards of its resources.

Inclusion – We celebrate diversity, invite multiple points of view, and recognize the potential of every individual.

Leadership – We embrace the Library's role as community leader and empower staff to learn, innovate and lead.

# Library Fast Facts

## FY2024

**8,675,973**

Total Circulation

**656,783**

Wi-Fi Usage

**2,261,354**

Library Visitors

**22\***

Locations (\*Library Administration Center)

**341,412**

Active Cardholders

**458**

Library Employees

**20,670**

Programs

**\$53,792,130**

FY2024 Annual Budget

# FY2024 Budget

## \$53,792,130

### Revenue – \$53,792,130

| Mecklenburg County | State of North Carolina | ABC Board | Federal     | Other Revenue |
|--------------------|-------------------------|-----------|-------------|---------------|
| \$47,145,138       | \$682,386               | \$860,733 | \$2,897,842 | \$2,206,031   |

### Expenses – \$53,792,130

| Salaries & Benefits | Library Collections | Facility Related | Programming | Other Operating Expenses |
|---------------------|---------------------|------------------|-------------|--------------------------|
| \$36,346,355        | \$8,038,522         | \$3,752,264      | \$680,503   | \$4,974,486              |



# Strategic Direction FY26-28

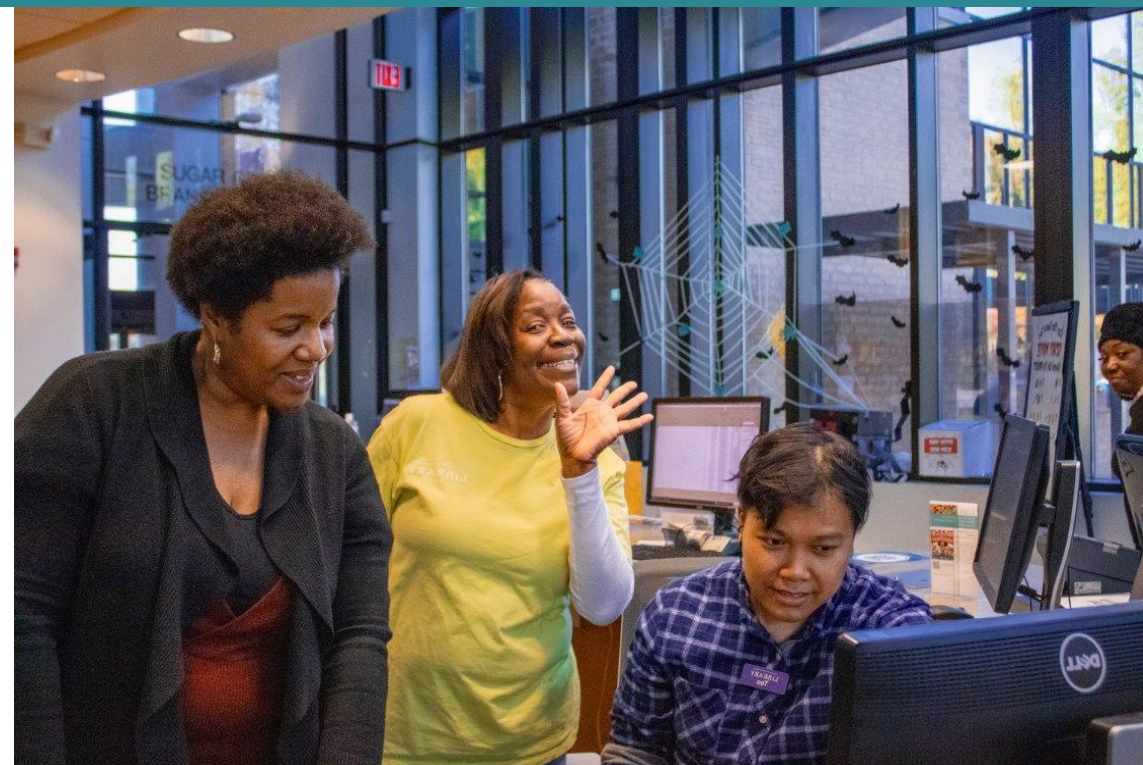
## Areas of Focus

Main Library

Prepare & Excel

Access & Welcome

Learn & Engage





# New Main Library





# Main Library

Will once more be Charlotte Mecklenburg Library's flagship location in Uptown Charlotte

## State-of-the-art

- Knight Hall – The dynamic grand lobby
- Open air courtyard
- Forum for new, innovative programming
- Immersive theater area for live performances with digital integration
- Café
- New resident welcome center
- Outdoor terrace

## Technologically advanced

- Opportunity and career center
- Innovation lab supports the conception and development of new ideas
- Technology hub
- Digital visualization lab provides resources and support for discovering, analyzing, and visualizing information
- Study carrels
- Multi-purpose classroom



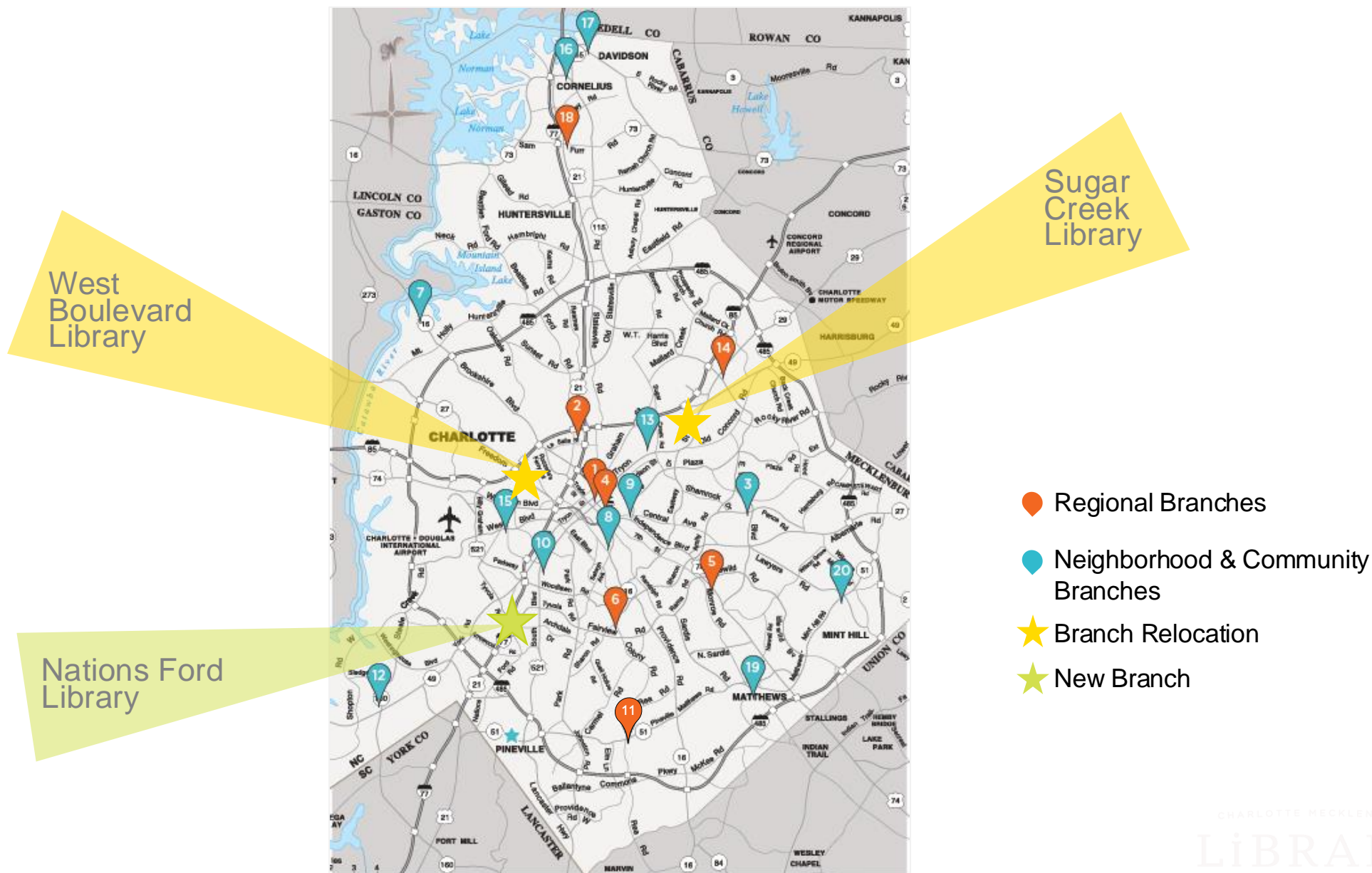


# New Main Library





# Capital Improvement Plan



# Sugar Creek Library

## At A Glance

### NEW Sugar Creek Library

- ~20,000 sq/ft, single story
- **Estimated completion - 2027**
- Will include:
  - Main lobby
  - Service points
  - Meeting & study rooms
  - Reading areas
  - Book stacks
  - Community assembly room



*Scan the QR code to  
participate in the survey!*



Current Sugar Creek Library



# University City Regional Library

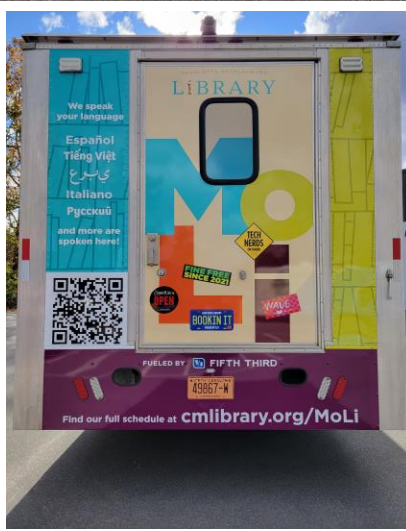
Celebrated the official Grand Opening on February 8

- Largest regional library in Mecklenburg County
- Dedicated children's and teen program areas
- Large community room and flexible meeting spaces
- Less than a half-mile from the LYNX Blue Line JW Clay Station



# On the Go with MoLi

- Mobile Library called “MoLi”
- Library on wheels connects people of all ages to CML by lowering access barriers to our services
- Stocked with collection for children and adults; fiction and non-fiction in print and digital formats





# Stay Connected with MiLa

- Mobile internet lab called “MiLa”
- Operates up to 3x/week
- Provides computer and internet access | Uptown, along with digital literacy and workforce development programs
- Supplements computer access at branches during closures or disruption in normal service





# Children's Services

Summer Reading

EpicFest

Active Reading

Día

Storyvine





# Adult Programs

## Senior Planet

- Targeted digital literacy for seniors

## DigiLit

- Workforce-focused digital literacy to help with upskilling and learning needed tools

## Networking & Social Opportunities

- Book clubs, special presentations, writing workshops and more to keep seniors connected



# FY25 Collection Count

**2,592,125**

Some items you will find in our collection include:

- 154,206 Adult Fiction Print Books
- 149,668 eAudio Titles
- 118,891 Children's Picture Books
- 68,141 Children's Non-fiction Books
- 27,651 Books in Spanish
- 44,720 Books for Teens



# Materials Selection

**When researching what materials to purchase we often:**

- Consider how well-known the author is
- Compare with titles in existing collection and other materials available
- Evaluation by critics and reviewers from professional review journals like Library Journal, Publisher's Weekly, etc.

# Fine Free

## July 1, 2021 - Charlotte Mecklenburg Library went “fine free”

- Policy change part of Library's FY2022 budget
- Library no longer assess late fees or overdue fines on any of its materials
- CML encourages all users to come back to the Library



# Archives & Special Collections

## Collecting Areas

- North Carolina History & Culture
- Genealogy
- Rare Books
- Archives & Manuscripts
  - Mecklenburg County-focused
  - If you have items to donate contact [carolinaroom@cmlibrary.org](mailto:carolinaroom@cmlibrary.org)

## Program of Service

- Robinson-Spangler Carolina Room
  - 4<sup>th</sup> floor of New Main Library
  - Research guidance, genealogical assistance, quiet study space
- Programs
  - Genealogy
  - City and County History
- Digitization
  - [Vault.cmlibrary.org](http://Vault.cmlibrary.org)

# ALERT: Integrated Library System Transition

CHARLOTTE-MECKLENBURG  
LIBRARY

## April 1 - Limited Services

- Cardholders cannot place holds, submit interlibrary loan, or suggest materials
- Card signups are unavailable

## April 13 - Limited Services

- Material checkout is limited to in-branch availability
- Returns will not be processed until April 23
- Cardholders cannot access accounts

## April 18 - Temporary Closure

- All branches and book drops close. The Library will remain closed through April 22

## April 23 - Branches Reopen

- All services return to normal and returns are processed

For more information visit [bit.ly/CML\\_ILS](https://bit.ly/CML_ILS)



Thank you!

