

# Mecklenburg County Park and Recreation

## Sarah Stevenson Tuesday Forum

January 14, 2025



Mecklenburg County  
Park and Recreation

# Guiding Principles

Commit to Equity

Evolve and Grow

Tell More Stories

Move Beyond  
Boundaries

# Principles and Goals

Commit to Equity	Evolve and Grow	Tell More Stories	Move Beyond Boundaries
Engagement	Stewardship	Celebration	Partnerships
Reinvestment	Programming	Communication	Leadership
New Investment	Land Acquisition	Hospitality	Collaboration
Inclusion	Staffing	Reflection	Connections
	Funding		

# Meck Playbook Zoom In

## Reinvestment

- Focus on reinvestment in low rated facilities first

## Investment

- Greenway trail investment an on-going priority
- Take advantage of partnerships



# Parks and Nature Preserves

## Investment Projects

### Tier One

- 4 of 18 Projects Funded

### Tier Two

- 4 of 29 Projects Funded

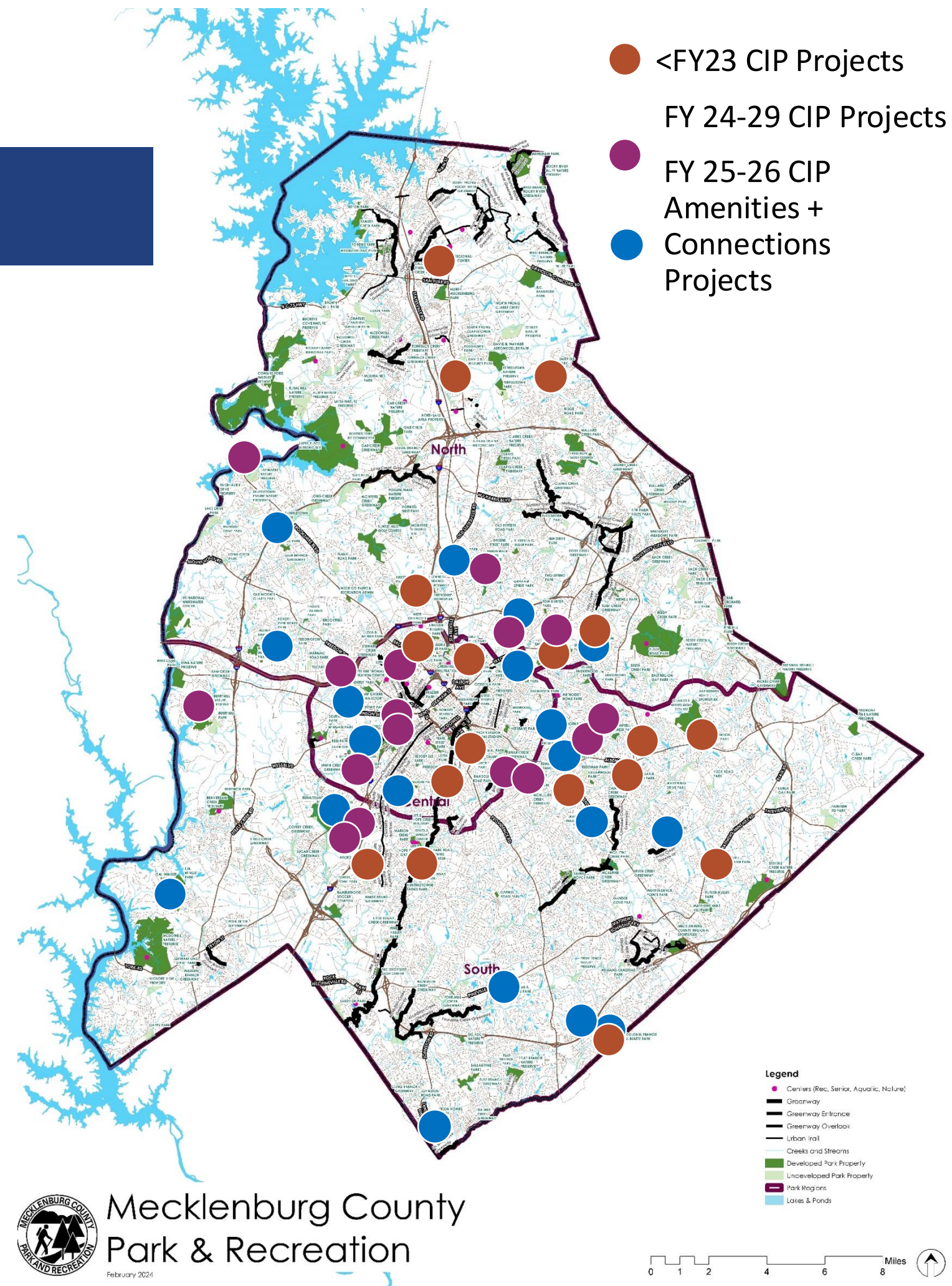
## Reinvestment Projects

### Tier One

- 30 of 34 of Projects Funded

### Tier Two

- 5 of 12 Projects Funded



# Greenway Trails

## Investment Projects

### Tier One

- 10 of 30 Projects Funded

## Reinvestment Projects

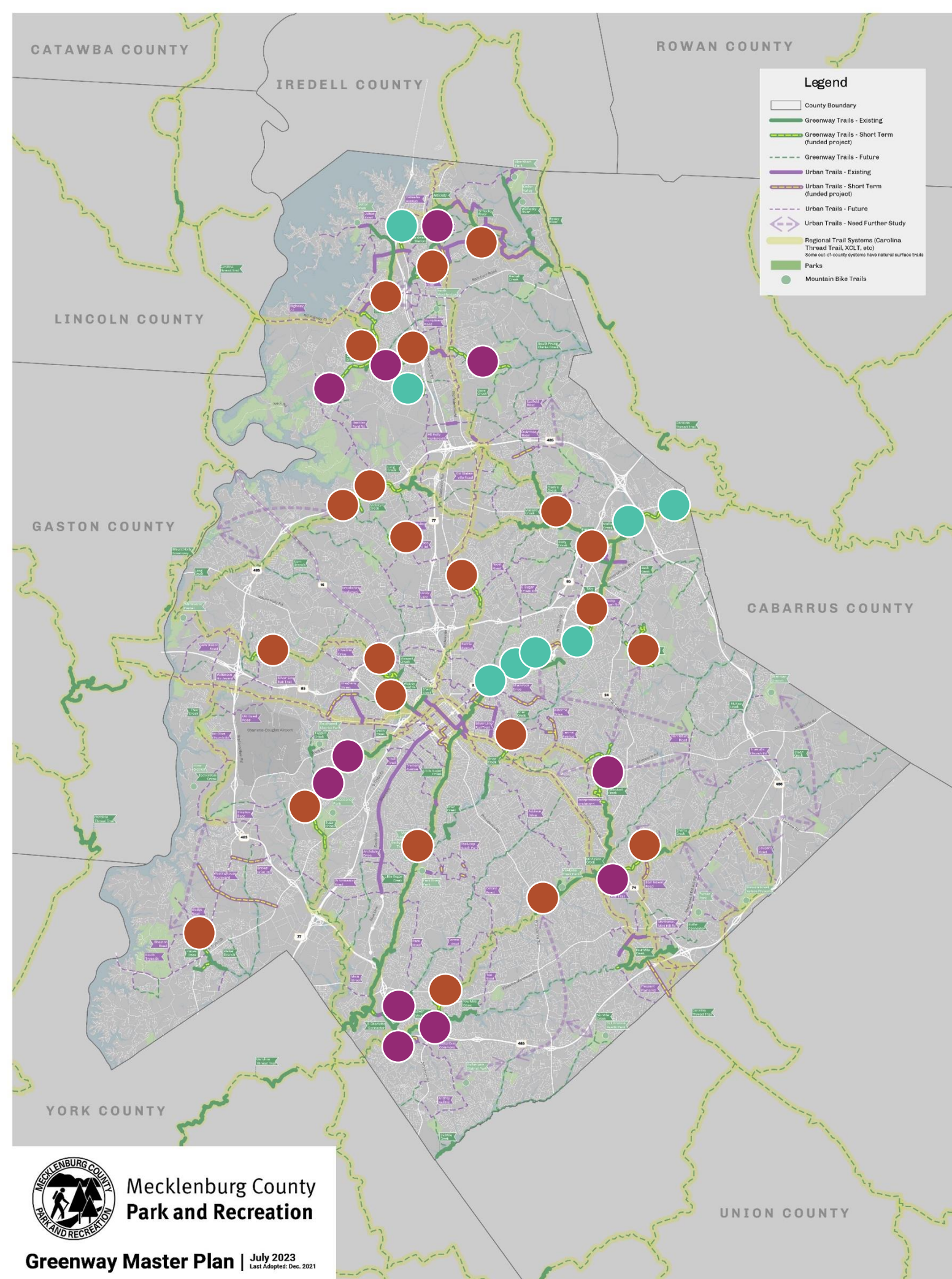
### Tier One

- 3 of 4 Projects Funded

### Tier Two

- 2 of 5 Projects Funded

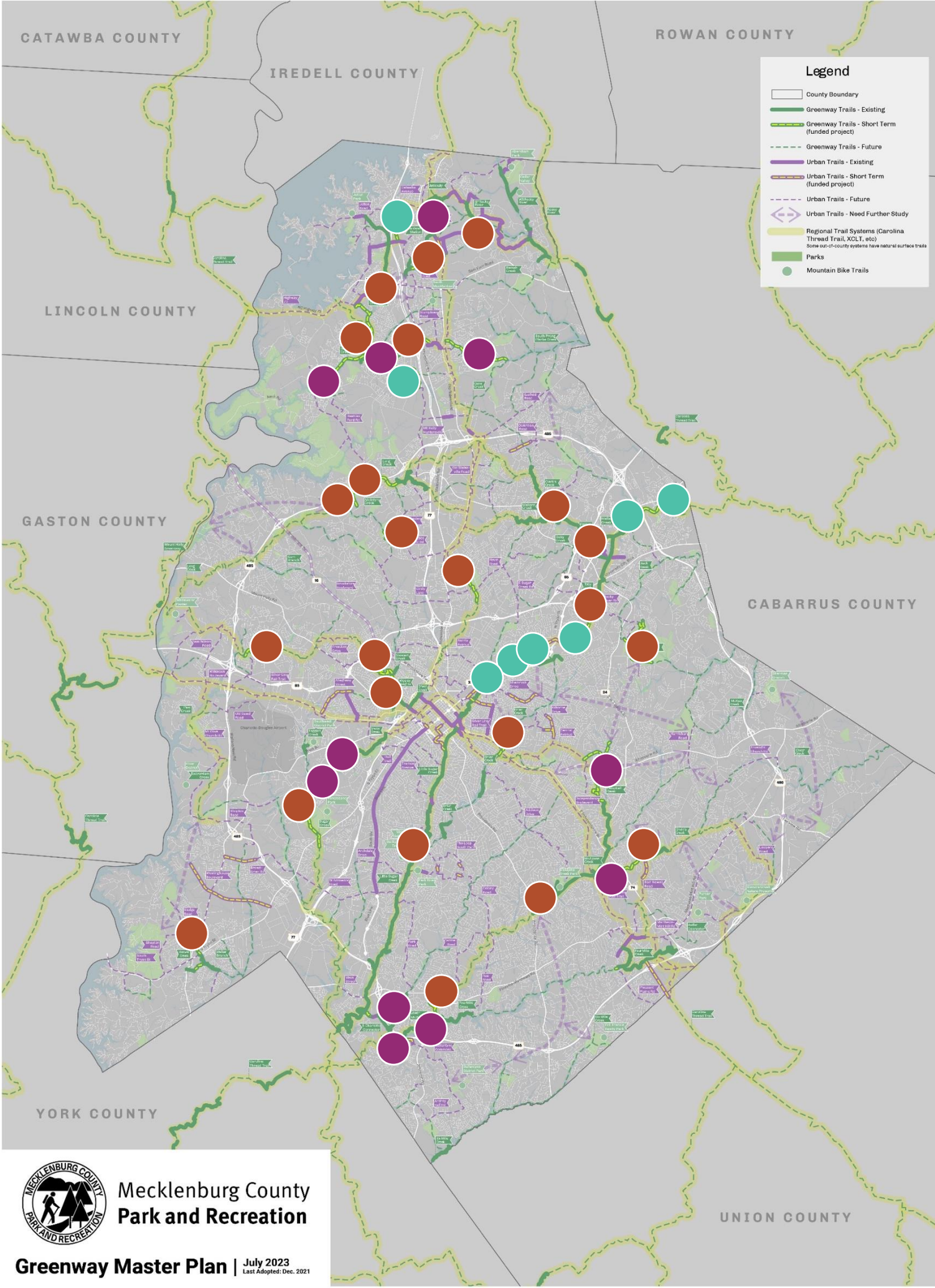
- <FY23 CIP Projects
- FY 24-29 CIP Projects
- Partner Projects



# Greenway Projects

Miles	Greenway Development Status
74.29	Existing/Developed (+ 21.5 miles of Access Trails) (+29 Miles of Urban Trails)
16.33	Funded – In Construction
10.86	Funded – In Design
6.9	Funded – Future
10.92	Funded – By Others (Includes City + Town projects)
119.3	Total Greenway Miles

- <FY23 CIP Projects
- FY 24-29 CIP Projects
- Partner Projects



# Facilities

## Reinvestment Projects

### Tier One

- 3 of 4 Projects Funded

### Tier Two

- 0 of 5 Projects Funded

### Tier Three

- 1 of 11 Projects Funded

## Investment Projects

- Plan identified amenities, not sites
- Broader study underway



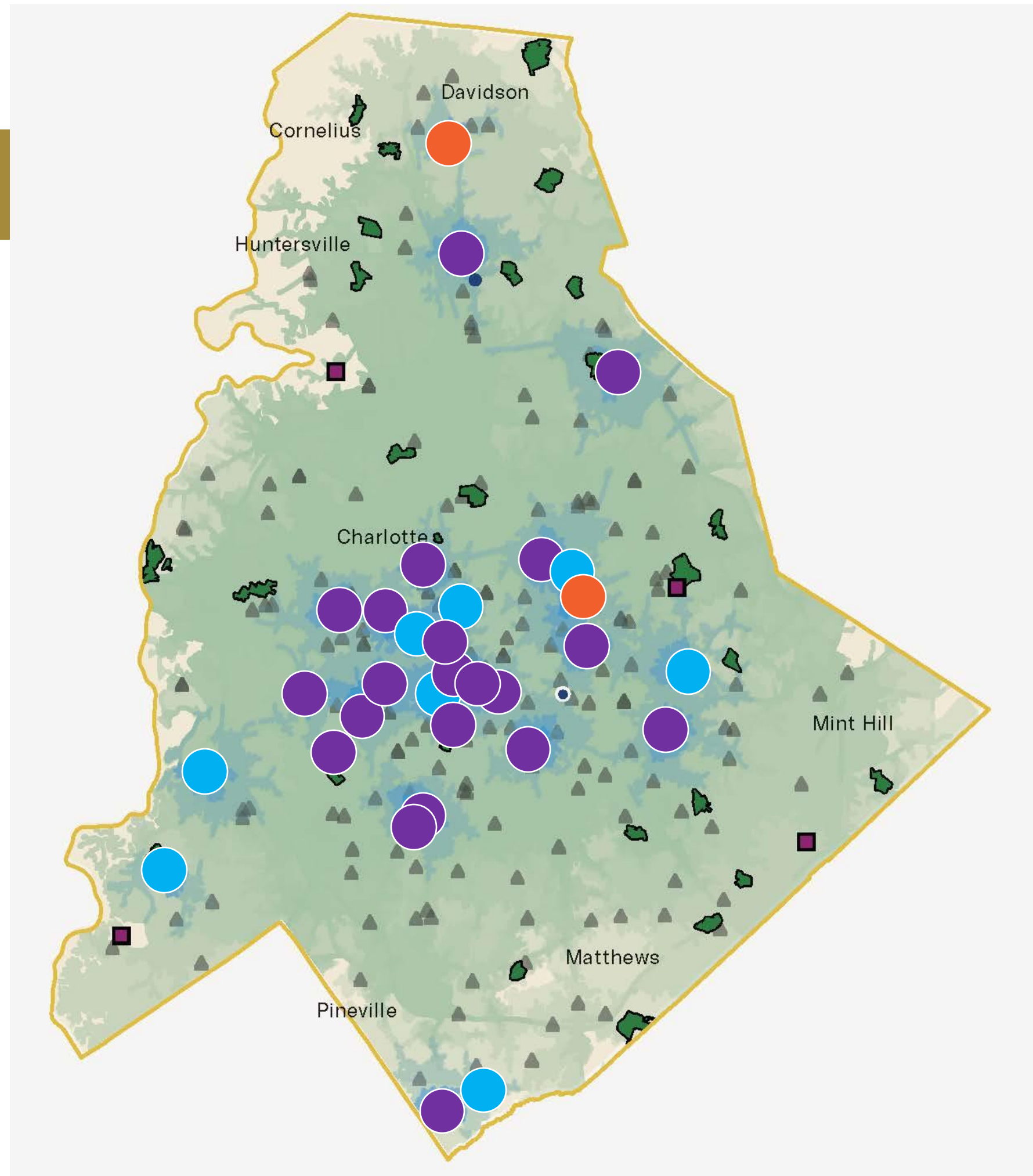
# Facilities

## Investment

- 2 Regional Recreation Centers
- 21 Community Recreation Centers
- 8 School Recreation Centers

### Recreation Center Study

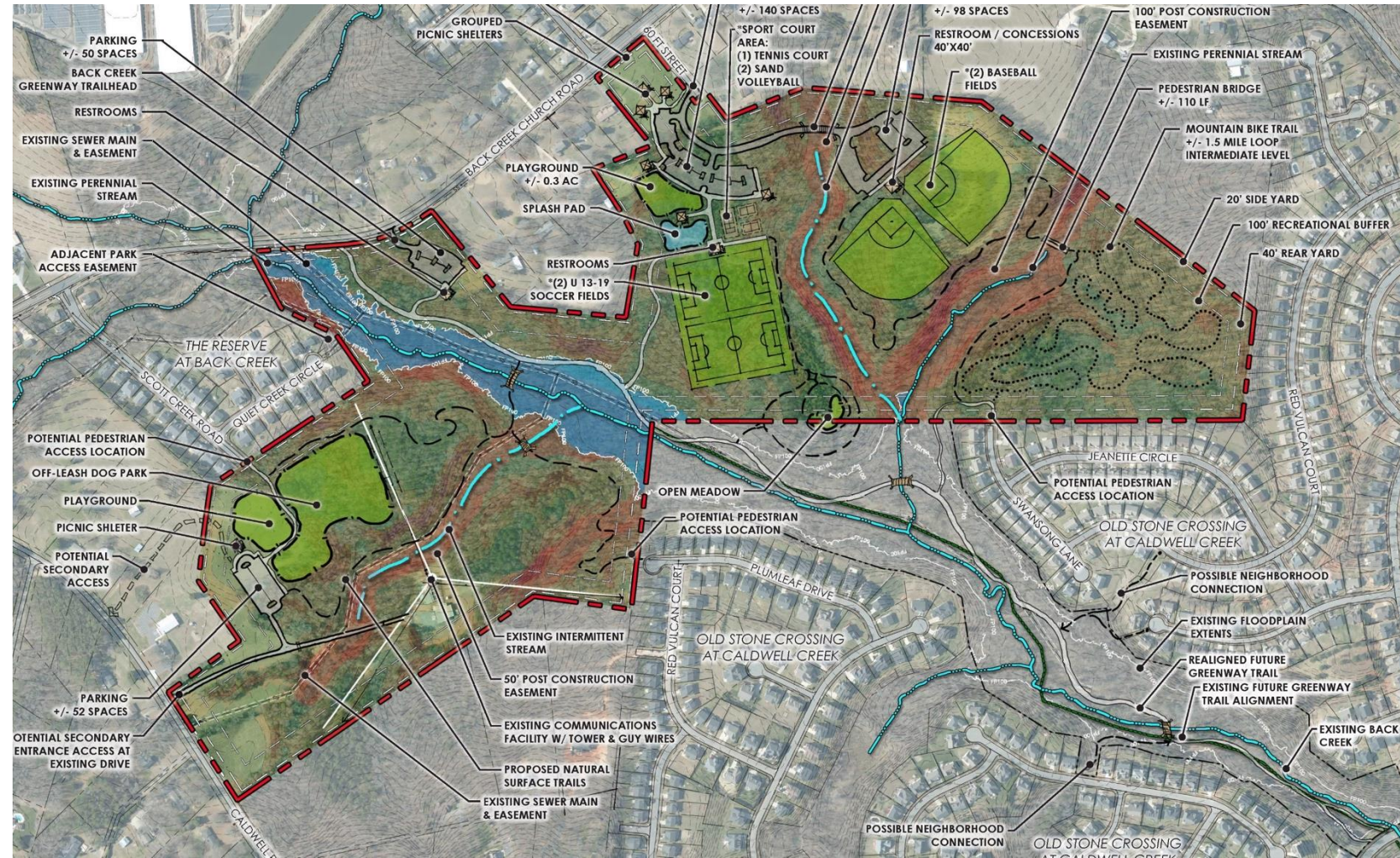
- Assess existing facilities
- Identify locations for future facilities



# Look Ahead

## Other Planning Items

- Meck Playbook Update
  - Master plans typically updated every 10 years, minor updates every 5 years
- Meck Playbook update scheduled 2025/2026
  - Share successes
  - Update gap areas and priority communities
  - Update investment/reinvestment project lists
  - Include new parkland reserves on investment project list
  - Include recreation center recommendations



# Contact

**Bert Lynn, PLA, ASLA**

Capital Planning Division Director  
Bert.Lynn@mecklenburgcountync.gov  
704-589-7491



**Mecklenburg County  
Park and Recreation**



# Land Acquisition

## Filling Gaps

- Create land acquisition priorities that address gaps in under-resourced communities and keep ahead of development.

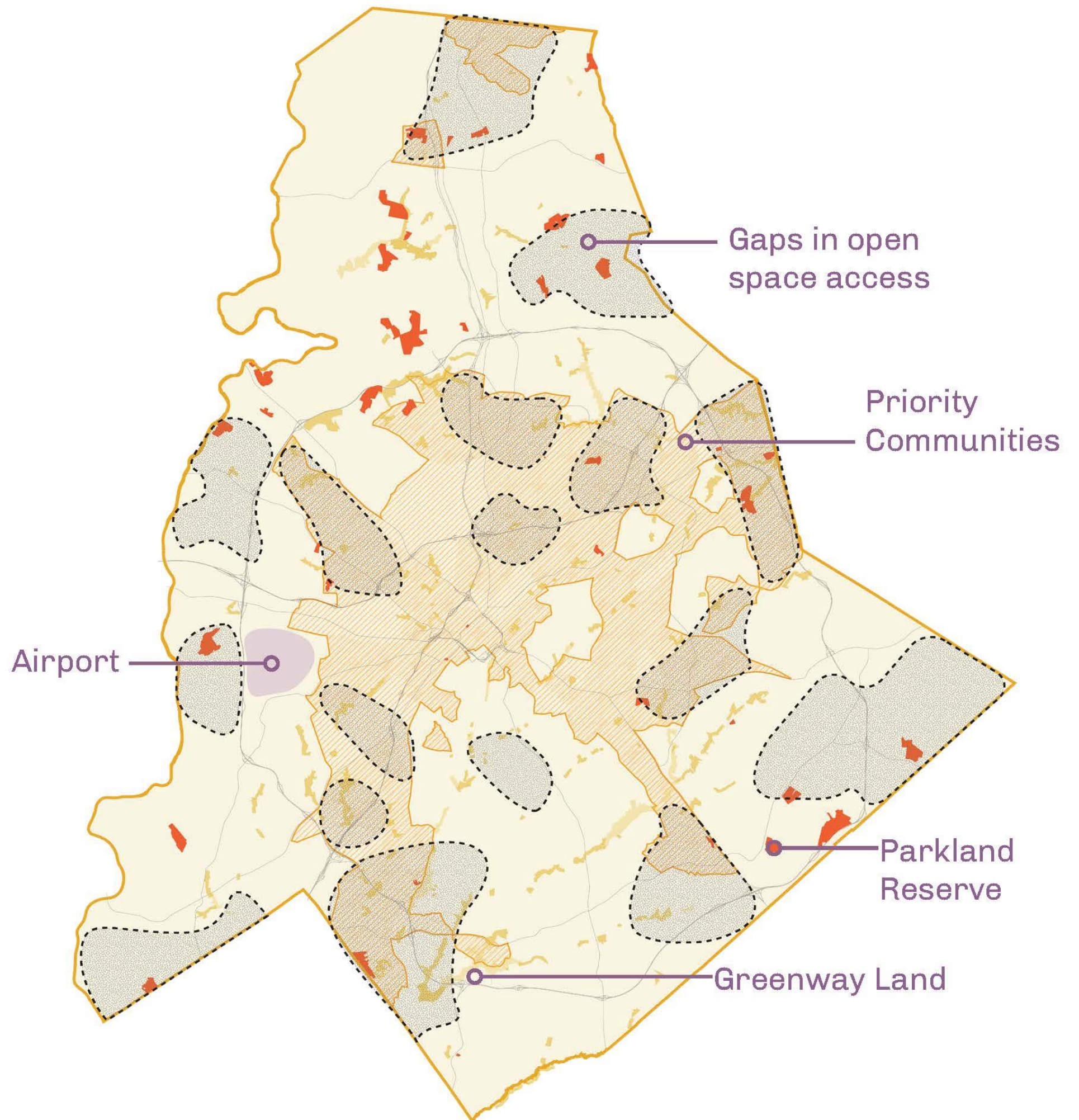
## Accounting for Growth

- Link existing parkland with other publicly accessible land.
- Explore parkland expansion through impact fees to balance open space acquisition with development.

## Restoring and Protecting Ecology

- Enhance the greenway network, designate new parkland reserves, and procure open space.

## Aligns with Environmental Stewardship Action Plan



# Land Acquisition

- FY 2021
  - 308 acres
- FY 2022
  - 295 acres
- FY 2023
  - 495.69 acres
- FY 2024
  - 550.94 acres acquired

## Meck Playbook Gap Areas and New Land Acquisitions

