

## Florals? For spring? Groundbreaking.

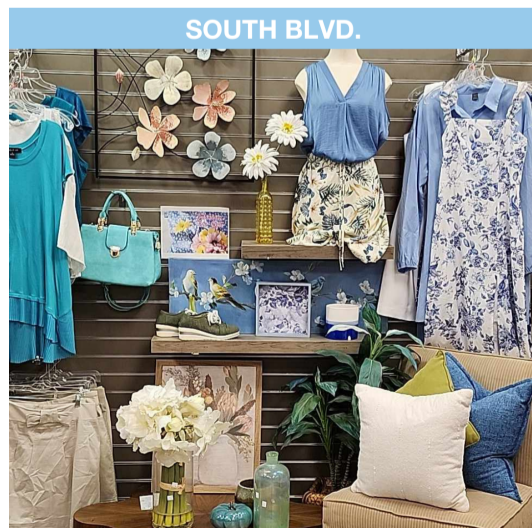
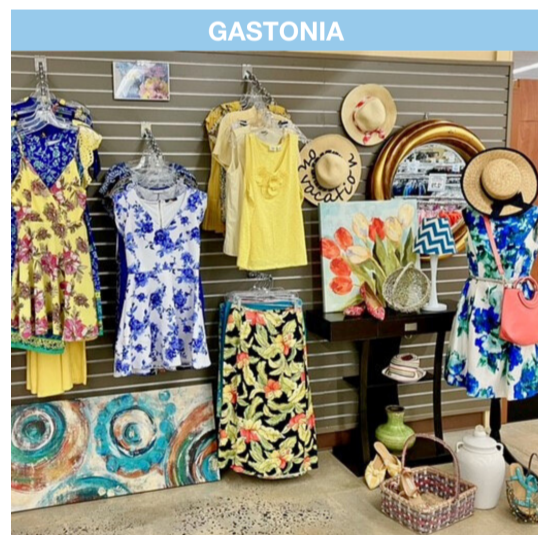


**From** Goodwill Industries of the Southern Piedmont <community@goodwillsp.org>  
**To** <sjohnston@tuesdayforumcharlotte.org>  
**Reply-To** Goodwill Industries of the Southern Piedmont <community@goodwillsp.org>  
**Date** 2024-05-08 11:00



### GREAT FINDS IN STORES NOW

As nature bursts into bloom and the days are getting longer and warmer (☀️), now's the perfect time to freshen up your wardrobe with a few secondhand pieces perfect for springtime. Whether you're looking to add vibrant florals or soft pastels to your ensemble, our [retail stores](#) are sure to have something for you at an affordable price.





---

## MORE THAN A THRIFT STORE

### GOOD FOR OUR COMMUNITY

Your donations and purchases do big things for our community! The money we make from selling donated items in our stores is what pays for the [job training programs](#), [job search support](#) and [family stability services](#) that we offer completely free of charge to [thousands of people](#) in our community each year, including our very own [team members](#).

### GOOD FOR OUR PLANET

Goodwill stores play a big part in the circular economy, which is a system that keeps products in circulation for as long as possible. Goodwill helps communities extend the life of usable items, which reduces the amount of material sent to landfills or incinerators. Last year, we sold more than 17 million items in our stores and online shops - giving them a second chance.

## FIND A STORE

---



*Copyright © 2024 Goodwill Industries of the Southern Piedmont, All rights reserved.*

You are receiving this email because you opted in with Goodwill Industries of the Southern Piedmont. We will never spam you.

#### **Our mailing address is:**

Goodwill Industries of the Southern Piedmont  
P. O. Box 668768  
Charlotte, NC 28266

[Add us to your address book](#)

Want to change how you receive these emails?  
You can [update your preferences](#) or [unsubscribe from this list](#).

