



Dr. Crystal L. Hill

Superintendent



MY STORY

PUBLIC SCHOOLS OF THE CITY OF CHICAGO

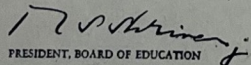
TEACHER'S CERTIFICATE

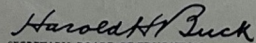
THIS IS TO CERTIFY THAT

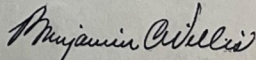
OMAR J. ROGERS

HAVING SATISFACTORILY COMPLETED ALL REQUIREMENTS AND PASSED
PRESCRIBED EXAMINATIONS IN ACCORDANCE WITH REGULATIONS
OF THE BOARD OF EDUCATION FOR THE POSITION OF TEACHER OF
INTERMEDIATE AND UPPER GRADES

IN THE PUBLIC SCHOOLS OF THE CITY OF CHICAGO, IS AWARDED THIS
CERTIFICATE.


PRESIDENT, BOARD OF EDUCATION


SECRETARY, BOARD OF EDUCATION


GENERAL SUPERINTENDENT OF SCHOOLS

TO DATE FROM FEBRUARY 14, 1959





PUBLIC SCHOOLS OF THE CITY OF CHICAGO

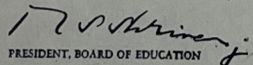
TEACHER'S CERTIFICATE

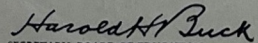
THIS IS TO CERTIFY THAT

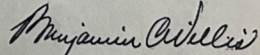
OMAR J. ROGERS

HAVING SATISFACTORILY COMPLETED ALL REQUIREMENTS AND PASSED
PRESCRIBED EXAMINATIONS IN ACCORDANCE WITH REGULATIONS
OF THE BOARD OF EDUCATION FOR THE POSITION OF TEACHER OF
INTERMEDIATE AND UPPER GRADES

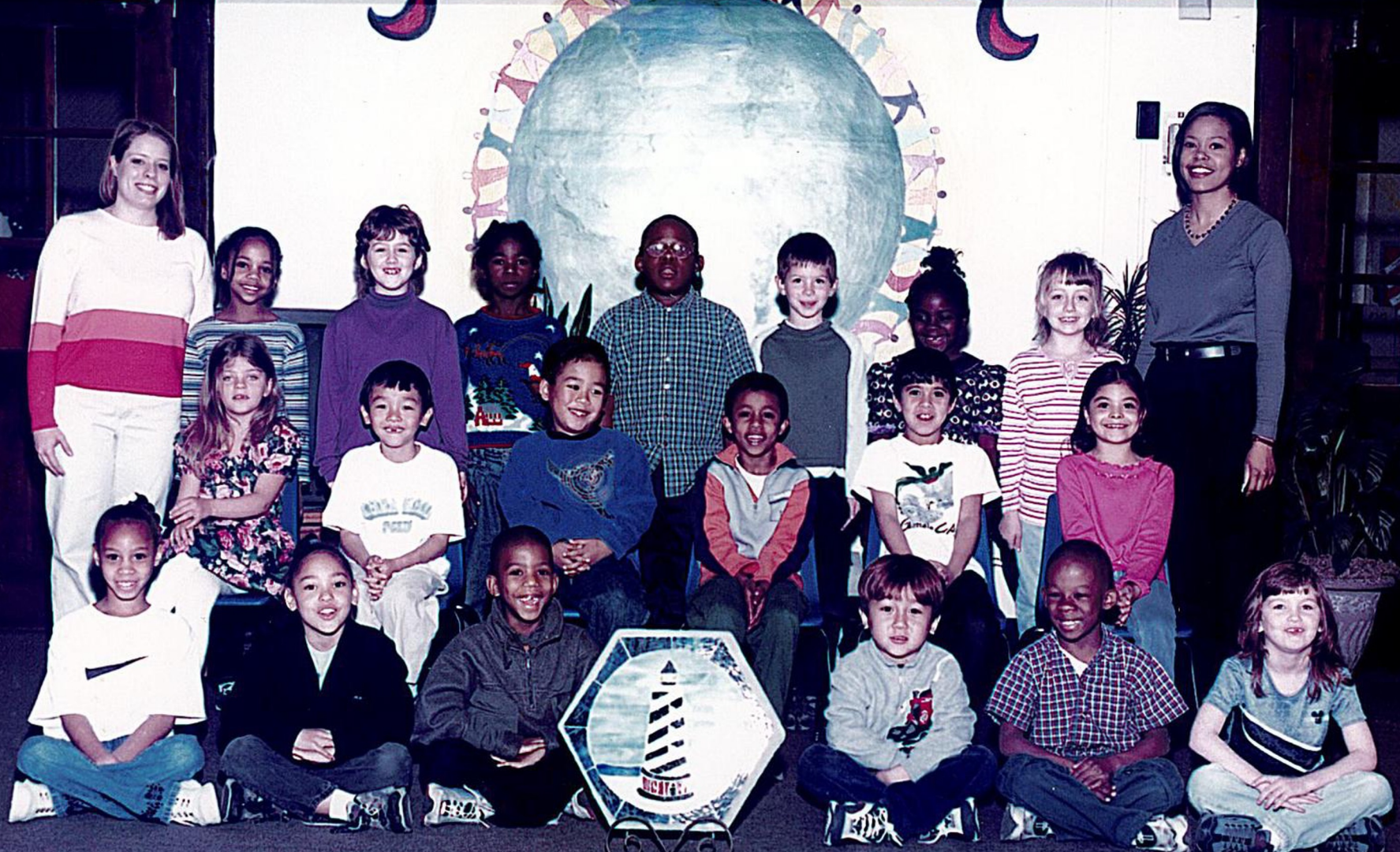
IN THE PUBLIC SCHOOLS OF THE CITY OF CHICAGO, IS AWARDED THIS
CERTIFICATE.


PRESIDENT, BOARD OF EDUCATION


SECRETARY, BOARD OF EDUCATION


GENERAL SUPERINTENDENT OF SCHOOLS

TO DATE FROM FEBRUARY 14, 1959













MISSION

Lead the community in educational excellence, inspiring intellectual curiosity, creativity, and achievement so that all students reach their full potential

VISION

Create an innovative, inclusive, student-centered environment that supports the development of independent learners

Endless Possibilities

Students must graduate from Charlotte-Mecklenburg Schools with ***employability*** and ***entrepreneurial*** skills and must be:

- Enlisted
- Enrolled
- Employed



ENLISTED



ENROLLED



EMPLOYED



ENDLESS POSSIBILITIES



EXCELLENCE WITHOUT EXCEPTION

PILLARS OF EXCELLENCE



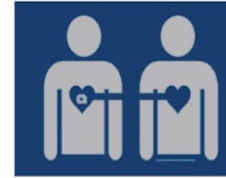
**ACADEMIC
EXCELLENCE**



**PEOPLE
EXCELLENCE**



**OPERATIONAL
EXCELLENCE**



**ENGAGEMENT
EXCELLENCE**



EXCELLENCE WITHOUT EXCEPTION

C.R.O.W.N. EXPERIENCE

C: customer-focused

R: responsive and respectful

O: optimistic

W: welcoming

N: needs-based service



A woman in a blue dress is being baptized by a priest in a blue robe. The priest is holding the woman's hand. A man in a suit is holding a Bible. The scene is set in a church.

MY COMMITMENT



LEAD FROM THE DRIVER'S SEAT



-INTEGRITY-



INTERDEPENDENCE



ROW TOGETHER



OUR SUCCESSES

NATIONALLY- OUTPERFORMED

Percentage of students at or above proficient in math and reading on NAEP Assessment



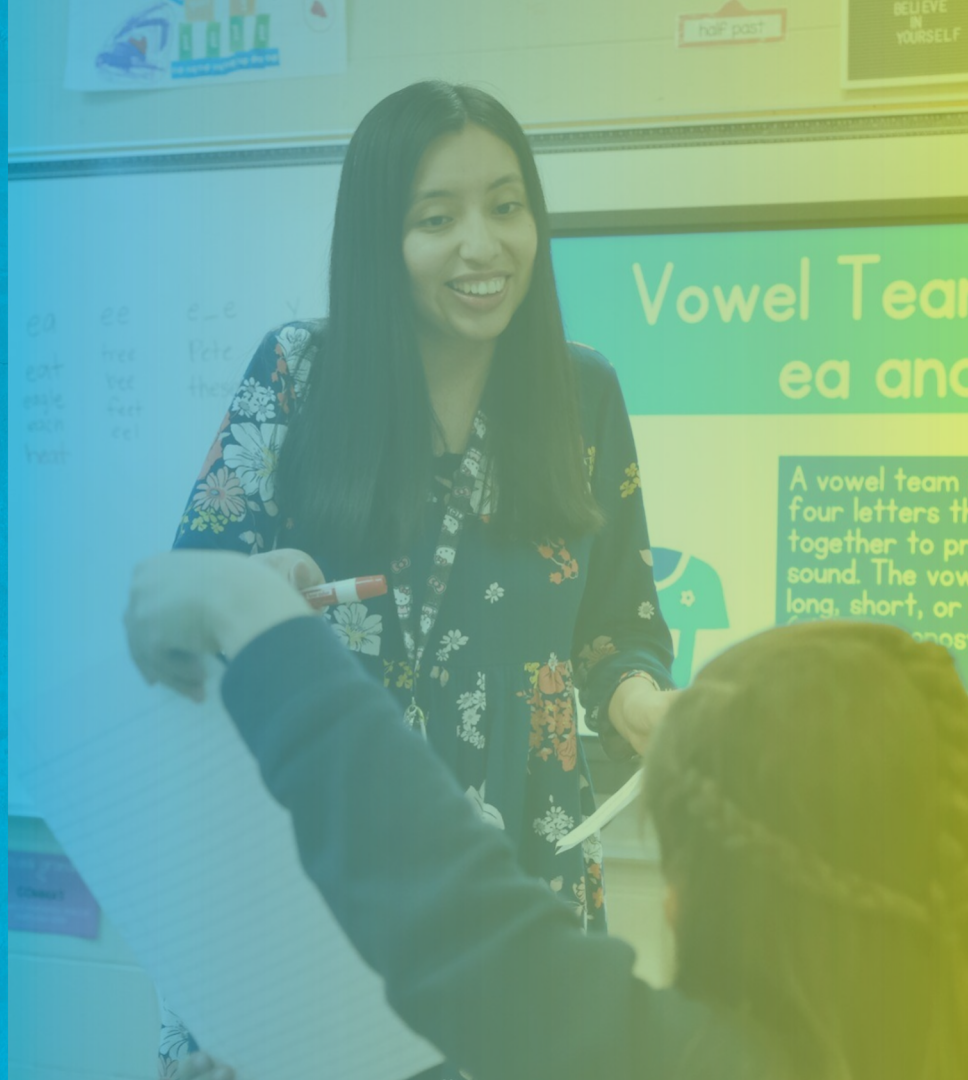
83% OF SCHOOLS MET OR EXCEEDED

State student growth
expectations



EARLY LITERACY

Students exceeded growth expectations in early literacy



READING: GRADES 3-8

Students exceeded reading expected growth

45.7% of students in grades 3-8 achieved grade level proficiency

28.5% of students in grades 3-8 achieved college and career readiness



MATH: GRADES 3-8

Exceeded expected growth in math

50% of students in grades 3-8 achieved grade level proficiency

34.8% of students in grades 3-8 achieved college and career readiness



HIGH SCHOOL MATH I AND MATH III

Met expected growth in Math I
and EXCEEDED in Math III

26.3% of students in high
school Math I and **56.9%** of
students Math III achieved
grade-level proficiency

8.2% of students in High School
Math I and **37.5%** of students in
Math III achieved college and
career readiness



BIOLOGY

Met expected growth in biology

50.5% of students achieved grade level proficiency

43.2% of students achieved college and career readiness



NCDPI RECOVERY ANALYSIS

Students MADE GAINS in math, reading and science, re-approaching pre-pandemic projected levels of achievement



2022-2023 **Preliminary** District Goal Data

CMS Goals	District 2021-22	District 2022-23 Actual	District SY2023-24 Target
Goal 1: The percent of Black and Hispanic third-grade students combined who score at the College and Career Ready (CCR) level 4 or 5 in English Language Arts (ELA) will increase from 15.9% in October 2021 to 50.0% by October 2024.	13.5%	16.4%	50%
Goal 2: The percent of high school students who score at the College and Career (CCR) level – a 4 or 5 – in Math 1 (grades 9-12) will increase from <5% (4.5%) in October 2021 to 25% in October 2024.	8.2%	9.4%	25%

*The results for 2022-23 are current as of 6/15/23 at 10:30 am.

Achievement Levels on State Assessments

NP: **Inconsistent** Understanding

Level 3: **Sufficient** Understanding (Grade-Level Proficiency)

Level 4: **Thorough** Understanding (Career and College Readiness)

Level 5: **Comprehensive** Understanding (Career and College

Readiness)

2022-2023 **Preliminary** District Goal Data

CMS Goals	District 2021-22	District 2022-23 Actual	District SY2023-24 Target
Goal 1: The percent of Black and Hispanic third-grade students combined who score at the College and Career Ready (CCR) level 4 or 5 in English Language Arts (ELA) will increase from 15.9% in October 2021 to 50.0% by October 2024.	13.5%	16.4% 32.1% On Grade Level	50%
Goal 2: The percent of high school students who score at the College and Career (CCR) level – a 4 or 5 – in Math 1 (grades 9-12) will increase from <5% (4.5%) in October 2021 to 25% in October 2024.	8.2%	9.4% 29.1% On Grade Level	25%

*The results for 2022-23 are current as of 6/15/23 at 10:30 am.

2022-2023 Preliminary Data Summary

- Increase in College and Career Readiness (CCR; Levels 4 and 5) in all areas except science
- Increase in College and Career Readiness (CCR; Levels 4 and 5) and Grade Level Proficiency (GLP; Level 3) in 3rd, 4th, and 6th grade math and reading across all groups of students
- Slight decreases in 8th grade math, 5th grade science, 8th grade science
- Substantial gaps exist between White and Asian students and Black and Hispanic students



WHAT'S YOUR NUMBER?



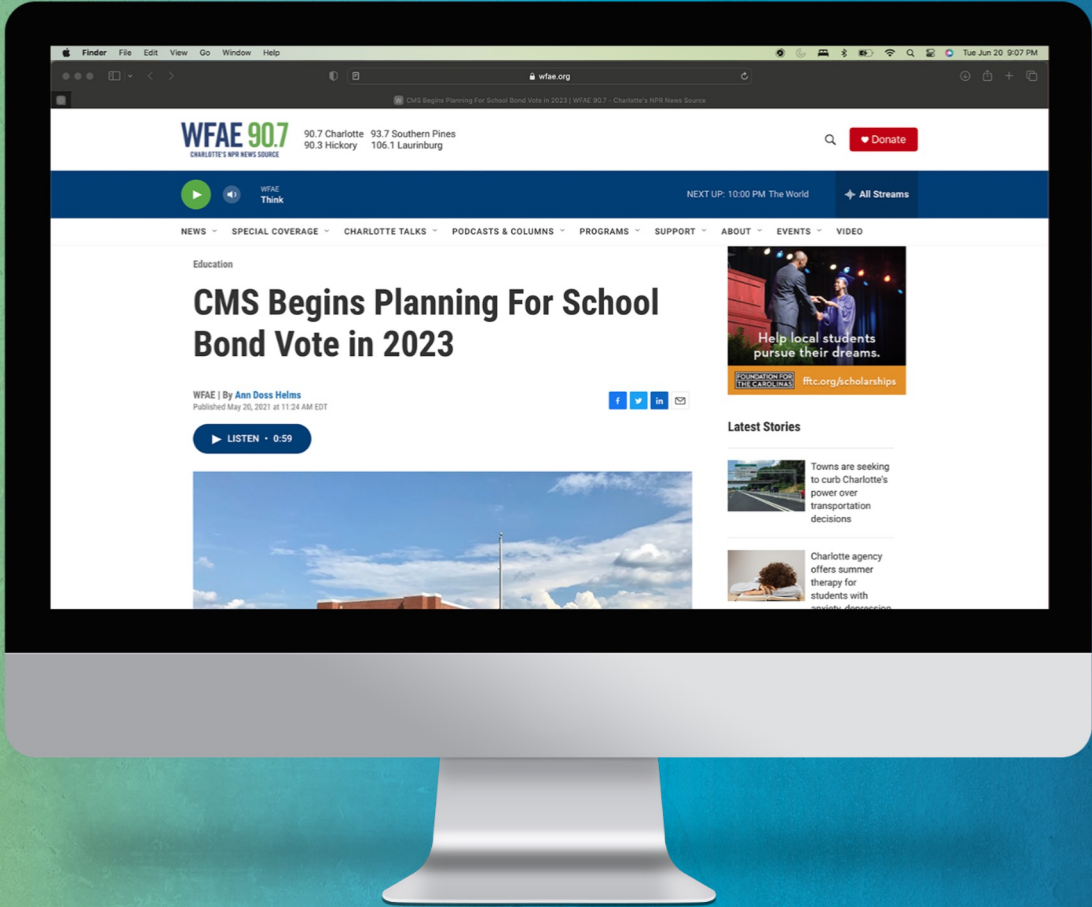
MTSS: MULTI-TIERED SYSTEM OF SUPPORT

- **SYSTEM** of support
 - **ACADEMICS**
 - **SOCIAL-EMOTIONAL**
 - **BEHAVIOR (INCLUDING ATTENDANCE)**
- **CORE - SUPPLEMENTAL - INTENSIVE**



EXCELLENCE WITHOUT EXCEPTION





WFAE 90.7
CHARLOTTE'S NPR NEWS SOURCE

90.7 Charlotte 93.7 Southern Pines
90.3 Hickory 106.1 Laurinburg

🔍 [Donate](#)



NEXT UP: 10:00 PM The World [All Streams](#)

[NEWS](#) [SPECIAL COVERAGE](#) [CHARLOTTE TALKS](#) [PODCASTS & COLUMNS](#) [PROGRAMS](#) [SUPPORT](#) [ABOUT](#) [EVENTS](#) [VIDEO](#)

Education

CMS Begins Planning For School Bond Vote in 2023

WFAE | By Ann Doss Helms
Published May 20, 2021 at 11:24 AM EDT



[▶ LISTEN](#) • 0:59



Latest Stories



- ALBEMARLE ROAD MS
- ALLENBROOK
- BERRYHILL SCHOOL
- BEVERLY WOODS
- CHANTILLY MONTESSORI
- COCHRANE COLLEGIATE ACADEMY/IMECK
- CORNELIUS
- COULWOOD STEM ACADEMY
- E.E. WADDELL
- EAST MECKLENBURG
- GARINGER
- HARDING UNIVERSITY
- HUNTERSVILLE
- J.T. WILLIAMS
- MARIE G. DAVIS
- MATTHEWS
- NEW MS #1
- NEW MS #2
- NEW MS #3
- NEW SECOND WARD MEDICAL & TECHNOLOGY HS
- NORTH MECKLENBURG
- NORTHWEST SCHOOL OF THE ARTS
- PARK ROAD MONTESSORI
- SOUTH CHARLOTTE
- SOUTH MECKLENBURG
- STEELE CREEK
- UNIVERSITY PARK CREATIVE ARTS
- VILLA HEIGHTS
- WEST REGIONAL ATHLETIC COMPLEX
- WILSON STEM ACADEMY

IMPACTED MAGNET PROGRAMS

- UNIVERSITY PARK/CREATIVE ARTS SCHOOL/FIRST WARD/NORTHWEST SCHOOL OF THE ARTS
- CHANTILLY/PARK ROAD/JOHN T. WILLIAMS MONTESSORI/MARIE G. DAVIS
- GARINGER HIGH SCHOOL/COCHRANE

TOP-30 PROJECTS

- **ALBEMARLE ROAD MS**
Onsite replacement with 45 CR baseline facility
Escalated Cost: \$100,474,587
- **ALLENBROOK**
Offsite replacement at Freedom Driving Range; demolish existing facility
Escalated Cost: \$78,774,504
- **BERRYHILL SCHOOL**
Offsite replacement; demolish building
Escalated Cost: \$110,503,393
- **BEVERLY WOODS**
Onsite replacement with 45 CR baseline facility
Escalated Cost: \$73,089,212
- **CHANTILLY MONTESSORI/COTSWOLD/BILLINGSVILLE**
Onsite replacement of Cotswold ES, collapsing paired school into Billingsville for project duration; renovate Billingsville for relocated Montessori PK-6 program; demolish Chantilly
Escalated Cost: \$79,177,946
- **COCHRANE COLLEGIATE ACADEMY/IMECK**
Onsite replacement with 54 CR baseline facility; relocate 9-12 iMeck program to Garinger HS
Escalated Cost: \$105,750,443
- **CORNELIUS**
Onsite replacement with 45 CR baseline facility
Escalated Cost: \$78,249,612
- **COULWOOD STEM ACADEMY**
Onsite replacement with 54 CR baseline facility; STEM program to remain
Escalated Cost: \$94,739,834
- **E.E. WADDELL**
Addition and renovation for 2nd phase of magnet program implementation
Escalated Cost: \$20,519,202
- **EAST MECKLENBURG**
Final phases of work, to include replacement of balance of campus buildings; comprehensive athletics package
Escalated Cost: \$206,100,591

TOP-30 PROJECTS (cont'd)

- **GARINGER**
Next phase of work, to include new kitchen/cafeteria, specialty classrooms, gym, and athletics; renovate and repurpose existing kitchen/cafeteria
Escalated Cost: \$56,112,751
- **HARDING UNIVERSITY**
Final phases of work, to include comprehensive athletics package and balance of campus replacement
Escalated Cost: \$207,692,152
- **HUNTERSVILLE**
Onsite replacement with 45 CR baseline facility
Escalated Cost: \$68,045,003
- **J.T. WILLIAMS**
Final phase of renovations to repurpose for alternative education programs
Escalated Cost: \$19,057,620
- **MARIE G. DAVIS**
Convert facility to 7-12 Montessori to replace use at J.T. Williams and expand program
Escalated Cost: \$5,768,523
- **MATTHEWS**
Replacement with 45 CR baseline facility
Escalated Cost: \$82,544,956
- **NEW MS #1**
Baseline 54 CR facility to relieve Community House MS, Jay M. Robinson MS, and Rea Farms STEAM K-8
Escalated Cost: \$92,050,248
- **NEW MS #2**
Baseline 54 CR facility at Stumptown Road to relieve Bailey Road, Davidson K-8, and JM Alexander
Escalated Cost: \$94,632,734
- **NEW MS #3**
54 CR baseline facility on HWY 160 to relieve Southwest and Kennedy middle schools
Escalated Cost: \$99,370,551
- **NEW SECOND WARD MEDICAL & TECHNOLOGY HS**
Full magnet high school on old Metro site; additional space to replace 5th floor of CMGC; relocate program from Hawthorne to facilitate Villa Heights replacement
Escalated Cost: \$186,384,308

TOP-30 PROJECTS (cont'd)

- **NORTH MECKLENBURG**
Final phase, to include onsite replacement of balance of campus, comprehensive athletics package
Escalated Cost: \$266,257,972
- **NORTHWEST SCHOOL OF THE ARTS/FIRST WARD**
Final phase of work, to include new specialty classroom space and 9-12 conversion/expansion; renovate First Ward as full magnet 6-8
Escalated Cost: \$95,954,985
- **PARK ROAD MONTESSORI/ SEDGEFIELD ES/DILWORTH**
Relocate Montessori PK-6 program to converted Sedgefield ES; replace PRM with 45 CR school for Dilworth paired schools; renovate Dilworth for a TBD magnet use
Escalated Cost: \$91,299,501
- **SOUTH CHARLOTTE**
Onsite replacement with 54 CR baseline facility
Escalated Cost: \$105,649,139
- **SOUTH MECKLENBURG HIGH SCHOOL**
Final phases of work, to include onsite replacement of balance of campus to +/- 100 CR baseline, comprehensive athletics package
Escalated Cost: \$128,394,161
- **STEELE CREEK**
Onsite replacement with 45 CR baseline facility
Escalated Cost: \$80,297,757
- **UNIVERSITY PARK CREATIVE ARTS**
Onsite replacement with 39 CR performing arts K-5 full magnet ES
Escalated Cost: \$77,164,880
- **VILLA HEIGHTS**
Offsite replacement at Hawthorne site; demolish current building
Escalated Cost: \$85,294,783
- **WEST REGIONAL ATHLETIC COMPLEX**
New multi-sport regional athletic competition complex with gymnasium; natatorium; stadium; fields; ancillary spaces
Escalated Cost: \$113,638,446
- **WILSON STEM ACADEMY**
Onsite replacement with 54 CR baseline facility
Escalated Cost: \$94,759,364

| CIP PROJECTS BY DISTRICT

PROJECTS BY CMBE DISTRICT

DISTRICT 1

Cornelius Elementary School
Huntersville Elementary
New MS #2 Bailey Rd Relief at Stumptown
North Mecklenburg High School

DISTRICT 2

Allenbrook Elementary School
Berryhill School
Coulwood Middle School
Harding University High School
John Taylor Williams Secondary Montessori
Marie G. Davis IB School
New Second Ward Medical & Tech HS (replace
Hawthorne Academy)
Northwest School of the Arts/First Ward
Steele Creek Elementary
University Park Creative Arts School
West Regional Athletic Complex
Wilson STEM Academy
Park Road Montessori/Sedgefield Elementary/Dilworth
Elementary*

DISTRICT 3

Cochrane Collegiate Academy
Garinger High School

DISTRICT 4

Albemarle Road Middle School
Billingsville Elementary/Chantilly Montessori/Cotswold
Elementary*
East Mecklenburg High School
Villa Heights Elementary

DISTRICT 5

Beverly Woods Elementary
Billingsville Elementary/Chantilly Montessori/Cotswold
Elementary*
Matthews Elementary School
Park Road Montessori/Sedgefield Elementary/Dilworth
Elementary*

DISTRICT 6

E.E. Waddell
New MS #1 Community House/Rea Farms Relief
New MS #3 relieve Southwest & Kennedy MS HWY 160
South Charlotte Middle School
South Mecklenburg High School

**Displayed twice due to overlapping districts*

PROJECTS BY BOCC DISTRICT

DISTRICT 1

Cornelius Elementary School
Huntersville Elementary
New MS #2 Bailey Rd Relief at Stumptown
North Mecklenburg High School

DISTRICT 2

Allenbrook Elementary School
Berryhill School
Coulwood Middle School
E.E. Waddell
Harding University High School
Northwest School of the Arts/First Ward
Steele Creek Elementary
University Park Creative Arts School
West Regional Athletic Complex
Wilson STEM Academy

DISTRICT 3

Cochrane Collegiate Academy
Garinger High School
John Taylor Williams Secondary Montessori
Marie G. Davis IB School
Villa Heights Elementary

DISTRICT 4

Albemarle Road Middle School
East Mecklenburg High School
New Second Ward Medical & Tech HS (replace Hawthorne Academy)
Northwest School of the Arts/First Ward*
Billingsville Elementary/Chantilly Montessori/Cotswold Elementary*
Park Road Montessori/Sedgefield Elementary/Dilworth Elementary*

DISTRICT 5

Beverly Woods Elementary
Billingsville Elementary/Chantilly Montessori/Cotswold Elementary*
Park Road Montessori/Sedgefield Elementary/Dilworth Elementary*
South Mecklenburg High School

DISTRICT 6

Matthews Elementary School
New MS #1 Community House/Rea Farms Relief
New MS #3 relieve Southwest & Kennedy MS HWY 160
South Charlotte Middle School

**Displayed twice due to overlapping districts*

We need YOU!

- Volunteer
- Tutor
- Connect



INTERDEPENDENCE



**How do you want to
engage with me?**

cms

Charlotte-Mecklenburg Schools