

Assessing the impact of the Knight Research Network



From Knight Foundation <web@knightfoundation.org>

To Sarah <sjohnston@tuesdayforumcharlotte.org>

Date 2021-01-29 12:17

[View this email in your browser ↗](#)



**KNIGHT
FOUNDATION**

**INFORMED AND
ENGAGED COMMUNITIES**

WHAT'S NEW AT KNIGHT

Welcome to [@knightfdn](#), your quick look at how Knight Foundation fosters informed and engaged communities.



Share



Tweet



Forward

In March, the Knight Media Forum will examine trust in media, local journalism's pandemic response and systemic inequity. [RSVP here.](#)

Knight Media Forum 2021

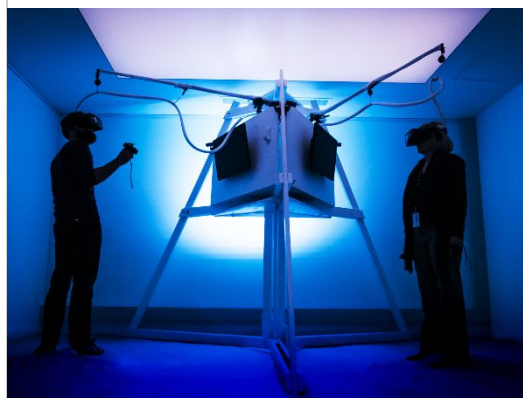
Kelly Jin, New York City's chief analytics officer, [will join Knight](#) as vice president for Community and National Initiatives.



Knight announced \$665K in support of **four Miami organizations** that are expanding entrepreneurship opportunities.

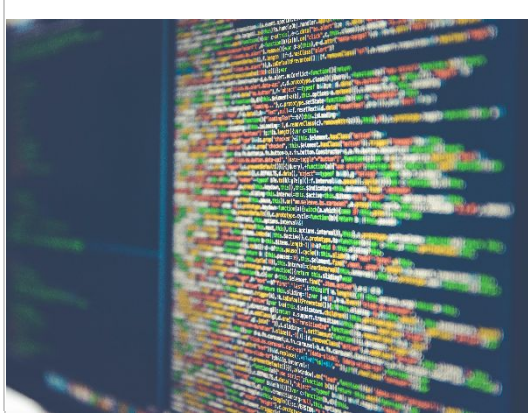


Knight published an assessment on how new digital staff in eight museums have [helped improve](#) connections with audiences.



An assessment by Northeastern Prof. John Wibhey [examined the impact](#) of the Knight Research Network.

Media commentator Mark Glaser analyzed how philanthropic organizations and local foundations [can help sustain](#) local news.



View more at [KF.org](https://kf.org) and on Twitter [@knightfdn](https://twitter.com/knightfdn).



Copyright © 2021 John S. and James L. Knight Foundation, all rights reserved.

Want to change how you receive these emails?
You can [update your preferences](#) or [unsubscribe from this list](#).

John S. and James L. Knight Foundation
200 S. Biscayne Blvd, Suite 3300
Miami, FL 33131