

Type here to search This Folder    Address Book  Options  Log Off

 Reply
  Reply to All
  Forward
  Move
  Delete
  Close
 



Knight Foundation [web@knightfoundation.org]

**Sent:** Thursday, August 13, 2020 2:24 PM

**To:** Steve Johnston

[View this email in your browser](#) ↗



**KNIGHT  
FOUNDATION**

**INFORMED AND  
ENGAGED COMMUNITIES**

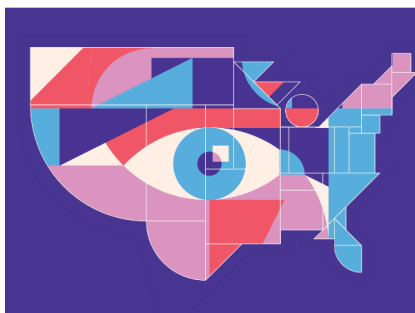
## WHAT'S NEW AT KNIGHT

Welcome to [@knightfdn](#), your quick look at how Knight Foundation fosters informed and engaged communities.

[!\[\]\(cf531ed27e91483460120fcc057b3901\_img.jpg\) Share](#) [!\[\]\(34fde9b7c74442c0438f550a41236260\_img.jpg\) Tweet](#) [!\[\]\(f3ffd03e145adb5d0f6f54d9f4fb82fd\_img.jpg\) Forward](#)

A landmark [Gallup/Knight survey](#) of 20,000 Americans shows trust in an objective media is eroding.

Knight's Nate Wallace shares [what equity means](#) for Detroit's arts community.



We launched Knight New Work 2020, an [report](#) shows how the [arts](#) and [public open call](#) to reimagine Miami's performing [spaces](#) increase community ties. arts scene during COVID-19.

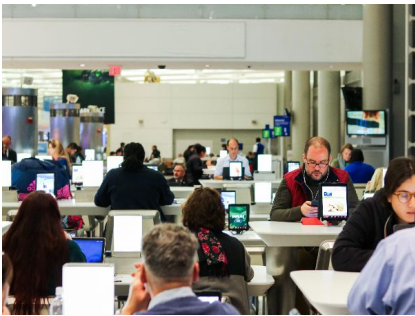


Local data from a Knight/Urban Institute report shows how the [arts](#) and [public spaces](#) increase community ties.



[NewsLens](#), a news aggregator and

Two Community Science reports [examine](#) research platform from Gallup and Knight, [practical ways](#) to measure success as cities revitalize their downtowns and public spaces. lets readers earn rewards for reading and sharing the news.



View more at [KF.org](#) and on Twitter [@knightfdn](#).



Copyright © 2020 John S. and James L. Knight Foundation, all rights reserved.

Want to change how you receive these emails?  
You can [update your preferences](#) or [unsubscribe from this list](#).

John S. and James L. Knight Foundation  
200 S. Biscayne Blvd, Suite 3300  
Miami, FL 33131



 Connected to Microsoft Exchange