

CAMPUS CONNECTIONS

WAS ESTABLISHED:

- To equip students with a strong Christian foundation by providing instruction in the fundamentals of Christian belief and doctrine.
- To create and maintain an atmosphere for spiritual growth.
- To develop strong character in students based on the principles of integrity, honesty, fairness, service, human dignity and a pursuit of excellence.
- To work with high school students to increase their awareness of the educational and cultural opportunities available to them at Historically Black Colleges and Universities (HBCUs).
- To serve as liaison between the students, their parents and the universities to help identify and interpret pertinent information that will best benefit the students in their chosen areas of study.
- To facilitate supplementary guidance and mentoring for students who need additional support throughout their college experience. This is realized in the form of workshops, classes and one-on-one consultations.
- To provide the experience of on-site visits to college and universities campuses and access to admissions directors, counselors, financial aid officers, department chairpersons and student representatives.



Campus Connections B.C.T., Inc.

P.O. Box 38188

Charlotte, NC 28278

www.campusconnections.org

Gerald J. Baucom

Phone: 980-253-6070

CAMPUS CONNECTIONS

A BIBLE CENTERED TEACHING PROGRAM

ABOUT CAMPUS CONNECTIONS

Since 1985, Campus Connections B.C.T., Inc. (Bible Centered Teaching) has been working with high school students to increase their awareness of the educational and cultural opportunities available to them at Historically Black Colleges and Universities (HBCUs).

Campus Connections B.C.T., Inc. (Bible Centered Teaching) is a nonprofit Christian organization that can serve up to 155 students per school year in grades 10 through 12. Campus Connections is fully chaperoned with a maximum ratio of 1:15. All monies collected are spent totally to run the program. Providing tours is only one activity offered to high school students.



WHAT DO THE STUDENTS LEARN?

Campus Connections students learn about specific programs such as Honors Programs and Honors College at each of the toured colleges and universities. These programs provide top level academics to the students. Honors students are competitive and among the most academically driven on the campuses. Their education is provided in an environment of caring professors and fellow students. The majority of the Campus Connections students enroll in Honors Programs.

Students are also introduced to newer high income majors such as Environmental Science, Hospitality and Hotel Management, Precise Science, Industrial Hygiene and Materials Engineering.

HOW TO APPLY

- All interested students must meet with a director along with a least 1 parent or guardian.
- Students and parents should call to schedule an interview between March and June before the new school year begins.
- Campus Connections summer activities begin in June.
- HBCU campus visits begin after the start of the new school year.
- The minimum academic requirement for the program is a 2.5 G.P.A.
- (More than three-fourths of Campus Connections students have G.P.A.s' of 3.4 or greater.)

CALL TO SCHEDULE AN INTERVIEW

Gerald J. Baucom - Mecklenburg: 980-253-6070

Sarah Chiles - Columbia: 803-788-4346

Ella Wells - York County: 803-417-1028

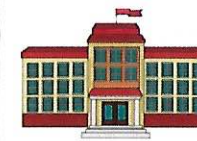
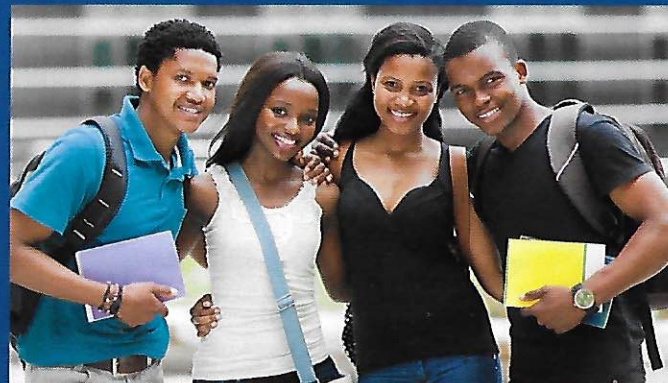
Jeanette Sanders - Chester County: 803-519-7981

Rev. Anthony Pelham - Lancaster County: 803-287-0585

Gregory Woods - Union County: 704-589-0351

Wendy Williams - Union: 704-843-6858

Bernadette Lyndsey - Winston-Salem & Greensboro:
336-745-5948



HBCU TOUR LIST

- Alabama State University
- Albany State University
- Benedict College
- Bennett College
- Bethune-Cookman University
- Bowie State University
- Claflin University
- Clark Atlanta University
- Delaware State University
- Elizabeth City State University
- Fayetteville State University
- Florida A&M University
- Fort Valley State University
- Hampton University
- Howard University
- Johnson C. Smith University
- Lincoln University
- Livingston College
- Morehouse College
- Morgan State University
- Morris College
- NC A&T University
- NC Central University
- Norfolk State University
- Paine College
- Savannah State University
- South Carolina State University
- Spelman College
- St. Augustine's College
- Tuskegee University
- University of Maryland Eastern Shore
- Virginia Union University
- Virginia State University
- Winston-Salem State University