

This email contains information about upcoming WIE and WIE Partner events.



WIE Wednesday

A Communication of Things Going On at WIE,
Its Partners and Community Organizations

[Website](#) | [About Us](#) | [Mentoring](#) | [Gallery](#) | [Events](#) | [Champions](#) | [Sponsors](#) | [Contact Us](#)

WIE High School Mentoring Program Starts with a BANG!

WIE held an orientation for parents, mentees and mentors involved in the Garinger High School Mentoring Across Difference program on October 2nd at the school. The purpose of the orientation was to explain the program's purpose, highlight expectations and outcomes, and give an opportunity for the mentees and mentors to get together. Over 50 people attended the session.



On October 3rd both the high school and college Mentoring Across Difference students along with Gwen Garnett, WIE Program Coordinator, and several mentors and friends attended **"Finding Neverland"** at the Blumenthal Performing Arts Center. **Finding Neverland** is Broadway's biggest new hit and the winner of Broadway.com's Audience Choice Award for Best Musical. This breathtaking smash hit captured the kid-at-heart in everyone who attended as it tells the incredible story behind one of the world's most beloved characters - **Peter Pan**.

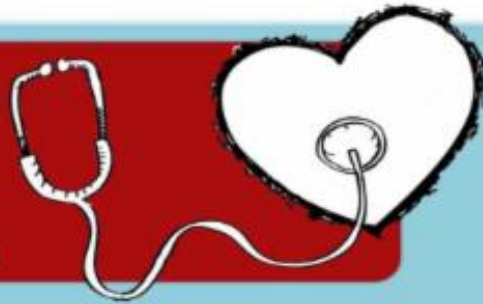


To find out more about the high school mentoring program and view photos from the orientation and **"Finding Neverland"**, click on either photo.

Three Part "Listen to My Heart" Series Begins Tonight!

Listen to My Heart

Cabarrus County Community Dialogue Series



Session 1: Who are We? Voices Often Not Seen or Heard

October 5th 6:00pm-8:00pm

Each speaker will share their own story along with cultural demographics and health disparities data in Cabarrus County.

Session 2: Who am I? Understanding Implicit Bias

October 12th 6:00pm-8:00pm

Dr. Christie Matthews and Dr. Jennifer Schaal will lead an interactive session to explore personal bias and how it affects the health of our community. Participants will do an activity to become aware of their own biases and to share thoughts and feelings about race and racism in our society.

Session 3: Digging Deeper Into White Privilege and Race. How Do We Go Forward?

October 19th 6:00pm-8:00pm

To understand where we go next, we must understand how we got here. Toussaint Romaine will join Chuck Collier to provide a historical view on race and white privilege. Participants will leave the workshop with ideas on how to move forward, personally and as a community, to improve relations and address healthcare disparities.

♥ Location: First Presbyterian Concord, 65 Union St. N, Davis Hall, Concord, NC 28025, (704)-788-2100

♥ Doors open at 5:30pm

♥ Open to the community

♥ Food Trucks Available



<http://www.wi-ce.net/>

CABARRUS
COLLEGE
of
HEALTH SCIENCES

<http://cabarruscollege.edu>

FIRST PRESBYTERIAN
CONCORD

<https://www.firstpresconcord.org/>

On Sunday, October 8 from 5 to 7 p.m. Covenant Presbyterian Church is sponsoring a Bluegrass BBQ including live music, BBQ from Smokey J's BBQ Food Truck and games for all ages in the circle. The event will be held, rain or shine in the Church Circle located at

1000 East Morehead Street
Charlotte, NC 28204



Open to all.



Support the Work of WIE

**WIE is a 501c(3) charitable organization.
Your membership/donation is tax deductible**

VISIT OUR WEBSITE



SUBSCRIBE TO LIST

FORWARD EMAIL