

This email contains information about upcoming WIE and WIE Partner events.



The banner features the WIE logo on the left, which includes a '10TH Anniversary' tag and the text 'women's inter-cultural exchange' and 'Culture. Trust. Community.'. To the right, the text 'WIE Wednesday' is written in a large, bold, pink font. Below this, in a smaller white font, is the subtitle 'A Communication of Things Going On at WIE, Its Partners and Community Organizations'.

[Website](#) | [About Us](#) | [Mentoring](#) | [Gallery](#) | [Events](#) | [Champions](#) | [Sponsors](#) | [Contact Us](#)

WIE Launches Garinger High School Mentoring Program **-- Become A Mentor --**

In the spring of 2017, the Women's Inter-cultural-Exchange submitted a proposal to Fifth/Third Bank for funding to conduct a project expansion pairing professional community mentors recruited by WIE, student mentees from JCSU, UNC-Charlotte and Queens University who are participating in WIE's MAD program and Garinger High School (GHS) students. The proposal was accepted and WIE was awarded \$2,500 for the expansion. Also, a proposal was written to Carolina's Health Care System to fund WIE programs, Cross-Cultural Chats, MAD and the MAD high school expansion. WIE has been awarded \$10,000 for 2017-18.



The goal of the expansion is to offer 15 mentees via the collaboration between WIE and GHS. The students will be given the tools needed to build trust across generation, race, culture and socio-economics, leading them on a path of success in the global economy. Cultivated and mentored graduates are more-likely to have a greater positive impact economically, socially and financially as they continue their education via universities, technical schools (career readiness) and become successful community members.

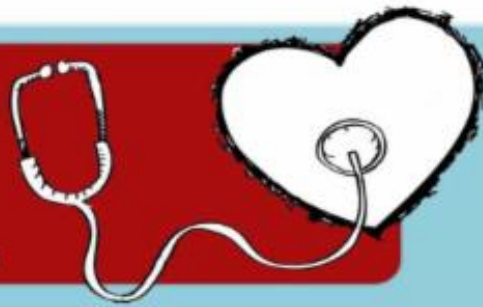
Mentors commit to the program for one academic year. The program includes orientations, goal-setting and intensive interaction between the pairs through a series of one-on-one meetings, group settings and electronic communications.

[**Read More ...**](#)

Three Part "Listen to My Heart" Series Begins October 5th

Listen to My Heart

Cabarrus County Community Dialogue Series



Session 1: Who are We? Voices Often Not Seen or Heard

October 5th 6:00pm-8:00pm

Each speaker will share their own story along with cultural demographics and health disparities data in Cabarrus County.

Session 2: Who am I? Understanding Implicit Bias

October 12th 6:00pm-8:00pm

Dr. Christie Matthews and Dr. Jennifer Schaal will lead an interactive session to explore personal bias and how it affects the health of our community. Participants will do an activity to become aware of their own biases and to share thoughts and feelings about race and racism in our society.

Session 3: Digging Deeper Into White Privilege and Race. How Do We Go Forward?

October 19th 6:00pm-8:00pm

To understand where we go next, we must understand how we got here. Toussaint Romaine will join Chuck Collier to provide a historical view on race and white privilege. Participants will leave the workshop with ideas on how to move forward, personally and as a community, to improve relations and address healthcare disparities.

♥ Location: First Presbyterian Concord, 65 Union St. N, Davis Hall, Concord, NC 28025, (704)-788-2100

♥ Doors open at 5:30pm

♥ Open to the community

♥ Food Trucks Available



<http://www.wi-ce.net/>

CABARRUS
COLLEGE
of
HEALTH SCIENCES

<http://cabarruscollege.edu>

FIRST PRESBYTERIAN
CONCORD

<https://www.firstpresconcord.org/>

Join WIE Today

●● Each of us
guards a gate of change
that can only be unlocked
from the inside. ●●

— MARILYN FERGUSON

*Support WIE
Donate!*

Support the Work of WIE

**WIE is a 501c(3) charitable organization.
Your membership/donation is tax deductible**

VISIT OUR WEBSITE



SUBSCRIBE TO LIST

FORWARD EMAIL