

This email contains information about upcoming WIE and WIE Partner events.



10TH Anniversary | **WIE**
women's inter-cultural exchange
Culture. Trust. Community.

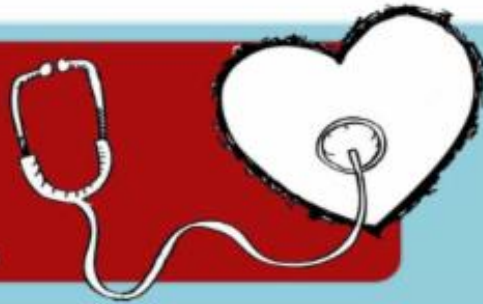
WIE Wednesday

A Communication of Things Going On at WIE,
Its Partners and Community Organizations

[Website](#) | [About Us](#) | [Mentoring](#) | [Gallery](#) | [Events](#) | [Champions](#) | [Sponsors](#) | [Contact Us](#)

Listen to My Heart

Cabarrus County Community Dialogue Series



Session 1: Who are We? Voices Often Not Seen or Heard

October 5th 6:00pm-8:00pm

Each speaker will share their own story along with cultural demographics and health disparities data in Cabarrus County.

Session 2: Who am I? Understanding Implicit Bias

October 12th 6:00pm-8:00pm

Dr. Christie Matthews and Dr. Jennifer Schaal will lead an interactive session to explore personal bias and how it affects the health of our community. Participants will do an activity to become aware of their own biases and to share thoughts and feelings about race and racism in our society.

Session 3: Digging Deeper Into White Privilege and Race. How Do We Go Forward?

October 19th 6:00pm-8:00pm

To understand where we go next, we must understand how we got here. Toussaint Romaine will join Chuck Collier to provide a historical view on race and white privilege. Participants will leave the workshop with ideas on how to move forward, personally and as a community, to improve relations and address healthcare disparities.

♥ Location: First Presbyterian Concord, 65 Union St. N, Davis Hall, Concord, NC 28025, (704)-788-2100

♥ Doors open at 5:30pm

♥ Open to the community

♥ Food Trucks Available



<http://www.wi-ce.net/>

CABARRUS
COLLEGE
of
HEALTH SCIENCES

<http://cabarruscollege.edu>

FIRST PRESBYTERIAN
CONCORD

<https://www.firstpresconcord.org/>

Join WIE Today

●● Each of us
guards a gate of change
that can only be unlocked
from the inside. ●●

— MARILYN FERGUSON

*Support WIE
Donate!*

Support the Work of WIE

**WIE is a 501c(3) charitable organization.
Your membership/donation is tax deductible**

VISIT OUR WEBSITE



SUBSCRIBE TO LIST

FORWARD EMAIL