



ImpactU Demo Day: All Llama, No Drama

Queen City Forward [info=queencityforward.org@mail226.atl171.mcdlv.net] on behalf of Queen City Forward [info@queencityforward.org]

Sent: Thursday, July 30, 2015 9:44 AM

To: sjohnston@tueforumclt.org

Keep calma, we have a llama.

[View this email in your browser](#)

Still not sure if you're attending ImpactU Demo Day?



How about now?

Keep calma, we have a llama. That's right, a llama. In addition to pitches from eight innovative college entrepreneurs and a special introduction from Mayor Clodfelter, our llama friend, Don Quixote, will be greeting guests at the door. Why a llama? You'll just have to come to Demo Day to find out for yourself.

ImpactU Demo Day is the culmination of our 10-week accelerator program for college level entrepreneurs. It is an opportunity to showcase the ideal economy at work and to celebrate the progress of these 6 social conscious startups. Come be a part of this unique experience to get involved with innovative startups that are shaping the futures.

And come meet the llama!

ImpactU Demo Day
Wednesday, August 5, 2015

UNC Charlotte Center City

5 - 6 pm Reception

6 - 7:30 pm Pitches

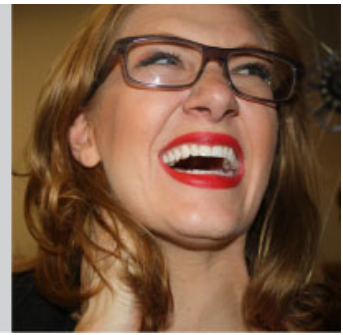
With a Special Introduction from Mayor Clodfelter

[RSVP To Reserve Your Spot Today](#)

IMPACT >U DEMO DAY

MC

HANNAH LEVINSON



IMPACTU SOCIAL ENTREPRENEURS

Vuepeer

Alex Smolen

IMPACT >U DEMO DAY

ALEX SMOLEN

VUEPEER



Wiphala

Jared Burris + Peter Rossi

IMPACT >U DEMO DAY

JARED BURRIS + PETER ROSSI

WIPHALA



The Learning Tree

Megan McLean

IMPACT >U DEMO DAY

MEGAN MCLEAN


THE LEARNING TREE



Pantrea
Brooke Brazer

IMPACT >U DEMO DAY


BROOKE BRAZER
PANTREA

A portrait of Brooke Brazer, a woman with long brown hair, wearing a black cardigan over a blue floral dress, standing with her hands on her hips.

TerraOak
Max Chinnah + Godwin Attigah

IMPACT >U DEMO DAY


MAX CHINNAH + GODWIN ATTIGAH
TERRAOAK

Two portraits of men. The top one shows Max Chinnah, a man with short hair wearing a grey t-shirt. The bottom one shows Godwin Attigah, a man with glasses wearing a blue patterned shirt.

UChef
Mary Guin

IMPACT >U DEMO DAY

MARY GUIN
UCHEF

A portrait of Mary Guin, a woman with blonde hair, wearing a white chef's coat, smiling.

THANK YOU TO OUR SPONSORS

IMPACT >U



Z. Smith Reynolds
FOUNDATION



GARZÓN CO.



Moore & Van Allen



Queen City Forward provides a hub for entrepreneurs who have business ideas that address social needs and work to balance a triple-bottom-line of people, planet and profit.

We encourage, enable and scale these social enterprises to build a robust cluster of innovation in the Charlotte region, helping to create our ideal economy.

Our Mission is to unleash the potential of high-growth, high-impact social entrepreneurs in Charlotte to create sustained economic and social impact that spurs economic development, improves the lives of citizens, and drives a new model of sustainable growth.

Queen City Forward is a is a non-profit 501(c)(3) organization. All **donations** are tax deductible.

VISIT US
WWW.QUEENCITYFORWARD.ORG




[Copyright © Queen City Forward. All rights reserved.](#)

[Our mailing address is:](#)
Queen City Forward
222 S. Church Street, Suite 100
Charlotte, NC 28202
T 704.457.9723
info@queencityforward.org

[unsubscribe from this list](#) [update subscription preferences](#)



 Connected to Microsoft Exchange