

## QCF's first ever Innovation Challenge > FOOD event a SUCCESS!

Queen City Forward [cthomas=queencityforward.org@mail32.us4.mcsv.net] on behalf of Queen City Forward [cthomas@queencityforward.org]

**Sent:** Wednesday, November 26, 2014 10:05 AM

**To:** [\[sjohnston@tueforumclt.org\]](mailto:sjohnston@tueforumclt.org)

### [Innovation Challenge > FOOD Finale!](#)



[What can a banker, nurse and entrepreneur do to solve food insecurity? On November 19 a full house of food enthusiasts joined us for QCF's very first Innovation Challenge event at Johnson & Wales Hence Auditorium.](#)

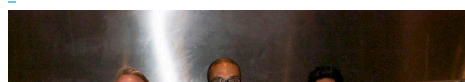
[We had 7 innovators who believe their ideas can make us healthier, happier and change the way we think about FOOD, so we gave them 5 minutes to prove it. As that wasn't interesting enough we invited our guests to enjoy local food from \*\*Tin Kitchen Nourish Blue Barn Bistro Mod Paleo & Neets Sweets\*\*](#)

[We were very proud to present Chef and author \*\*Cary Neff\*\*, the keynote speaker of the evening. He gave a cooking demo where he prepared some great Thanksgiving Food for this holiday season.](#)

[To see highlights from the event please click on the button below and check out pictures from the event itself.](#)

[Click here](#)

**CONGRATULATIONS** to the top 3 ideas that won prizes totalling \$10,000, a prize that will help them further their business concepts in a quest to improve our local food system & healthy food access.



[#1 place](#)

[GO-GO FRESCO](#)



**Nicholas Knock & Leconte Lee**  
 Charlotte's first true mobile farmers market. Their mission is to make local, healthy food and food education immediately accessible.

Read more [HERE](#)



**#2 place**  
**FOOD INNOVATION**  
**Lynn Caldwell**

A team of experts weave a food web of interconnected businesses with solid, revenue-based business models that support urban and rural farms

Read more [HERE](#)



**#3 place**  
**CROWN TOWN**  
**David Valder & Kris Steele**

Creating a hyper-local, bike-powered composting business that utilizes food waste to educate citizens, build community, clean the air, and beautify unused space.

Read more [HERE](#)

**THANK YOU** to all our partners that have made it possible to execute the very first QCF's Innovation Challenge program

Check out our [FB](#), [Twitter](#), and the hashtag [#FoodThinkCLT](#) for a general recap.





[Facebook](#) [Twitter](#) [Website](#) [YouTube](#) [Email](#) [Instagram](#)

*Copyright © 2014 | Queen City Forward, All rights reserved.*

**Our mailing address is:**

[info@queencityforward.org](mailto:info@queencityforward.org)

[unsubscribe from this list](#) [update subscription preferences](#)



Connected to Microsoft Exchange